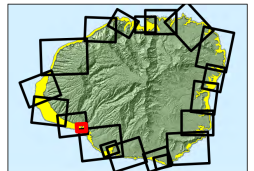


Shelter List for West Kauai
 Not every shelter will be opened during an emergency.
 Checks news media and county website (Kauai.gov)
 during emergencies for listings of open shelters.

Waimea High School
 Waimea Canyon Middle School

**Waimea Area
 Map 14**

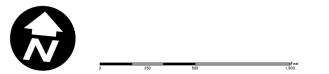
Note: Data represented on this map is not intended to replace site survey
 Copyright Kauai County All Rights Reserved 2016 (Original Map format was created by CCH © 2015)
 Date Prepared Jan 2016 - GAJ



*For most Tsunami Warnings, evacuate out of the red zone; in the unlikely case of an "Extreme Tsunami Warning", evacuate out of the red and yellow zones

*Remain at least 100 feet away from inland waterways and marinas connected to the ocean due to wave surges and possible flooding

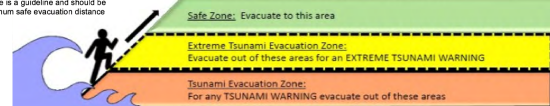
*Boaters should move vessels to at least 50 fathoms (300 ft) deep and 2 miles away from harbor entrances; follow all directions from the Captain of the Port



*Structural steel or reinforced concrete buildings of ten or more stories provide increased protection on or above the fourth floor; if you are caught near the shoreline consider using vertical evacuation

*These maps do not consider the destructive effects of a locally generated tsunami. If you feel shaking, move inland immediately, well inland from the red tsunami evacuation zone

*The evacuation zone is a guideline and should be considered the minimum safe evacuation distance



1. TSUNAMI WARNING: Destructive waves from a tsunami may inundate all coastlines; evacuate red areas
2. EXTREME TSUNAMI WARNING: In the unlikely event of an extreme tsunami, waves may move significantly inland; evacuate red and yellow areas

Legend

	Fire Station		Safe Zone
	Hospital		Extreme Tsunami Evacuation Zone
	EMS		Tsunami Evacuation Layer
	Police Station		Street
	Schools		Major Street
	Structures/Buildings (Large)		Coastline